

M02

IT : Istruzioni di montaggio
 EN : Assembling instruction
 RU : Инструкция монтажа
 DE : Gebrauchsanweisung
 FR : Mode d'emploi
 ES : instrucciones de montaje



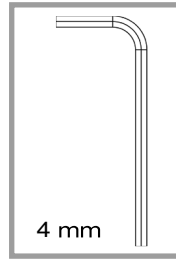
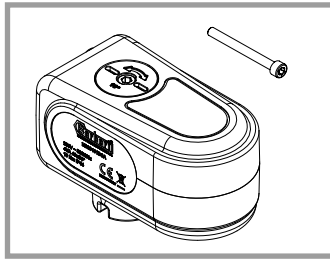
230 Vac/24 Vac



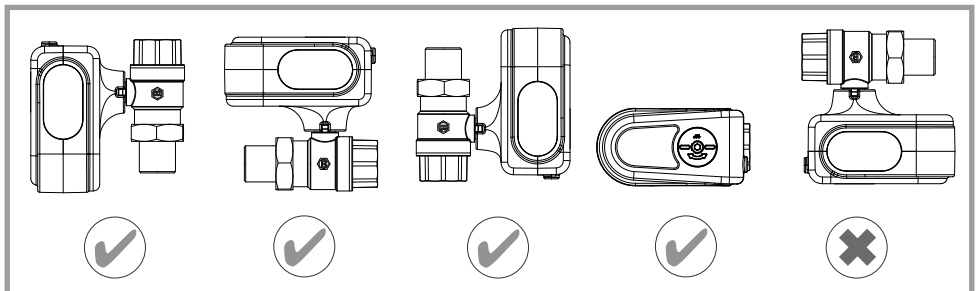
0 - 50 °C

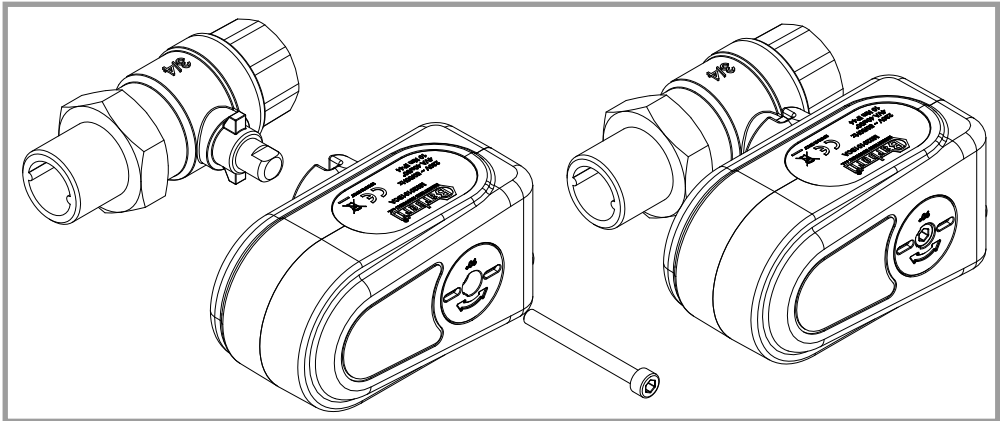


LVD 2014/35/EU
 EMC 2014/30/EU
 RoHS 2015/863

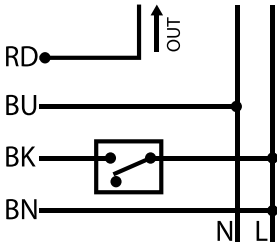
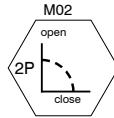


Code							Output	Aux. microswitch
M020101BCA	2 points	230 ± 10% Vac, 50 Hz	90°/40 s	10 N m	IP 44/II	3,5 W - max 5 W	1 signal in tension	-
M020102BCA	2 points	24 ± 10% Vac, 50 Hz	90°/40 s	10 N m	IP 44/II	3,5 W - max 5 W	1 signal in tension	-
M020101CCA	2 points	230 ± 10% Vac, 50 Hz	90°/40 s	10 N m	IP 44/II	3,5 W - max 5 W	-	1 SPST 6(f) A-230 Vac
M020102CCA	2 points	24 ± 10% Vac, 50 Hz	90°/40 s	10 N m	IP 44/II	3,5 W - max 5 W	-	1 SPST 6(f) A-230 Vac





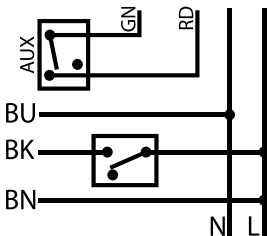
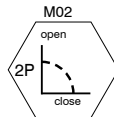
Cod.	V	s
M020101BCA	230	40
M020102BCA	24	40



BN: brown
BK: black
BU: blue
L: live
N: neutral
RD: red

2 points + output			RD
BN			-
BK			output

Cod.	V	s
M020101CCA	230	40
M020102CCA	24	40



BN: brown
BK: black
BU: blue
L: live
N: neutral
RD: red
GR: green

2 points + AUX			RD-GN
BN			
BK			